



Albatros

Barcode

1. INTRODUCTION	3
1.1 Foreword.....	3
1.2 Environment	3
2. DESCRIPTION	4
2.1 Startup.....	4
3. OPTIONS.....	5
3.1 Directories and barcode	5
3.2 Columns of the list and devices.....	7
4. REPORTS	9
5. TEXT FILE	10

1. INTRODUCTION

1.1 Foreword

This document describes the technical and functional features of the **Barcode** software package that allows you to read the labels and to enqueue its programs in Albatros.

1.2 Environment

Barcode management software module must be installed in the directory defined by the entry *Bin* of the TPA.INI file (usually **C:\Albatros** or **C:\Tpa\Albatros**).

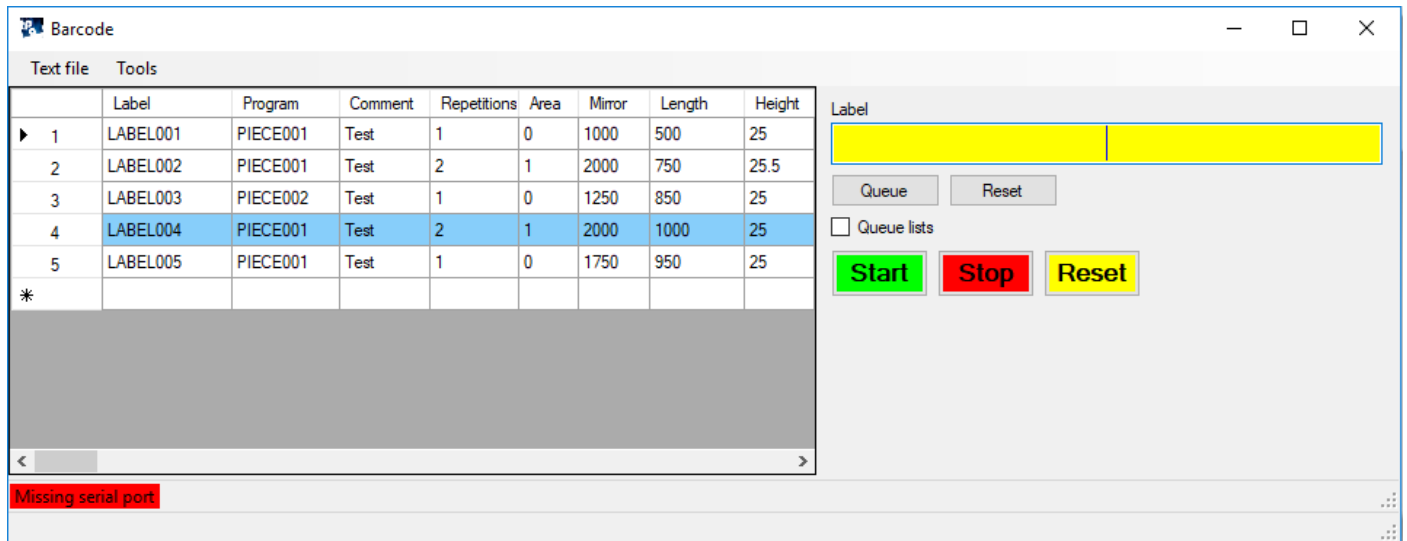
The configuration data is collected into **Barcode.XML** file, in *Bin* directory.

FrameWork runtime 3.5 is used.

2. DESCRIPTION

2.1 Startup

When you start the application program a window opens as follows:



When the barcode reading device acquires a label, the label in the range of characters set in the options appears. This label corresponds to an Albatros program (Edicad, TpaEdi32, TpaCAD) located in the corresponding directory of the Albatros programs. The Albatros program is added to the programs execution list (Wsc, Cnc2000, Lister, BKeeper, Genesis).

The command "Queue" allows you to enqueue an Albatros program in the execution list, whose name corresponds to the label inserted in the "Label" field. "Queue lists" is used to enqueue an Albatros list.

The "Reset" command cancels the "Label" field and deletes the reports older than five days from the current date.

If the table of the programs/label is enabled, before closing, the content of the table is saved in a text file (default: "Standard.Txt"). Each line corresponds to a label (see "TEXT FILE" paragraph). When the application starts, the "Standard.Txt" text file is read and saved in the directory of the text file.

By using the commands of the "Text file" menu, you can open or save the content of the programs/label table with name different from "Standard.Txt".

The "Options..." command of the "Tools" menu allows you to set the directories of the programs, the device type of barcode reading, the label structure, the main fields of the execution list and and the settings of the main screen.

The "Report..." command from the "Tools" menu allows you to display the errors and the warnings of the application.

The "Search" command from the "Tools" menu allows you to search for a label in the programs/labels table.

3. OPTIONS

3.1 Directories and barcode

The screenshot shows the 'Options' dialog box with the 'Directories and barcode' tab selected. The 'Columns of the list and devices' tab is also visible. The 'File Tpa.ini Directory' is set to 'C:\Albatros\Bin', 'Program directory' to 'C:\Albatros\PRODUCT', and 'Text file directory (*.Txt)' to 'C:\Albatros\Product\Txt'. The 'USB reader' checkbox is unchecked, and the 'USB Queue Timer (ms)' is set to 0. The 'Serial reader' section has 'Port' set to 'COM1', 'Baud rate' to '9600', 'Parity' to 'N', 'Data bits' to '8', and 'Stop bits' to 'One'. The 'Keyboard' checkbox is unchecked. The 'Index of initial character' is 1, 'Index of final character' is 0, 'Index of initial character for text file' is 0, and 'Index of final character for text file' is 0. The 'Terminator character' field is empty. The 'Albatros', 'Wsc', 'Cnc2000', 'BKeeper', 'Genesis', and 'Queue lists' checkboxes are unchecked. The 'Automatic Start', 'Commands for Albatros', and 'Text file' checkboxes are checked. The 'Missing program extension', 'Dxf program extension', and 'Label presence' checkboxes are unchecked. The 'Ok' and 'Cancel' buttons are at the bottom right.

The *Tpa.ini* file directory is used to set the directory where the Tpa.ini file is located.

The *Program directory* is used to set any directory of the Albatros programs (Edicad, TpaEdi32, TpaCAD). In case of empty field, the "DirProd" directory of the Tpa.ini. file is assigned.

The *Text file directory (*.txt)* is used to set the directory of text files, if any, containing information about Albatros programs.

USB reader is used to set a barcode reading device emulating the keyboard.

USB Queue timer (ms) sets the timer for automatic queuing of labels acquired with the USB reader (greater than zero).

Serial Reader is used to set a barcode reading device on the serial port with related parameters (Baud rate, Parity, Data bits, Stop bits).

Keyboard is set to assign the characters of an unusual language (for example: Russian) to the standard characters for the "Code39" and "Code128" symbols ("ABCDEFGHJKLMNOPQRSTUVWXYZabcdefghijklmnopqrstuvwxyz0123456789"). Used only if there is a reader on a serial port.

Index of initial character defines the first valid character of the label acquired by the barcode.

Index of final character defines the last valid character of the label acquired by the barcode.

Index of initial character for text file defines the first valid character of the label acquired by the barcode for the name of text file.

Index of final character for text file defines the last valid character of the label acquired by the barcode for the name of text file.

Albatros uploads the Albatros configuration.

Wsc activates the Wsc system for the execution list.

Cnc2000 activates the Cnc2000 system for the execution list.

BKeeper activates the BKeeper system for the execution list.

Genesis activates the Genesis system for the execution list.

If the *Wsc*, *Cnc2000*, *BKeeper* and *Genesis* fields are deactivated, the program is queued in the Albatros *Lister*.

Queue lists set the default for check in the main window.

Automatic start sends an Albatros start command to each label reading.

Albatros commands shows and activates the Albatros commands for the execution list (Start, Stop, Reset).

Text file activates the text file management. The files contain the information on Albatros programs. In the main screen page, the table of the programs is associated to the labels. If the labels correspond directly to the Albatros programs ready for the execution, this option is not necessary.

Missing program extension queues a program in the execution list without the Tcn extension.

Dxf Program extension queues a program in the execution list with Dxf extension (Wsc).

Label presence activates the search of the label in the table of the programs/labels, when a label is acquired. In case of search with positive outcome, the row becomes blue. If disabled, when a label is acquired, a row in the table with the label read and the data of the associated program is added. This option is used only if the *Text file* option is enabled.

Terminator sets the character that is deleted in the final part of the label acquired by the reader. In case of number, defines the number of characters deleted in the final part of the acquired label.

3.2 Columns of the list and devices

Options

Directories and barcode Columns of the list and devices

Lable fields

	Character index	Parametric field	Fixed field	Character index	Parametric field	Fixed field
▶	1	Program	:	2	Area	:

Lister Wsc Cnc2000 columns

	Wsc Prefix	Parametric field	Fixed field	Wsc Prefix	Parametric field	Fixed field
▶	#161=	Program	:	#171=	Area	:

List of devices

	Index	Machine	Group	Subgroup	Device	Description
	1	Mac	Grp	SubGrp	Dev	BARCODE
▶*						

Label field separator : Label field separator text file :

Customisation 0

Ok Cancel

Label fields

In this table the fields Program, Comment, Repetitions, Area, Mirror, Length, Height, Thickness, Loading, Unloading, Variable 1, .., Variable 50 can be associated to the label fields.

For each field you can set a fixed range of characters in the column "Characters Index" (2 numbers separated by the character ";") showing initial and final character of the label.

Otherwise, you can set a field separator in the "Fixed field" column. The "Character Index" column will show the index (as minimum one) of the fields separated by the character present in the "Fixed field" column.

Lister Wsc Cnc2000 BKeeper Genesis Columns

In this table you can associate the fields Program, Comment, Repetitions, Area, Mirror, Length, Height, Thickness, Loading, Unloading, Variable 1, .. Variable 50 to the fields of the execution list (Lister, Wsc, Cnc2000, BKeeper, Genesis). By saving a generic execution list, the lines in the file must correspond to the fields set in the above-mentioned table.

List of devices

In this table you can set Albatros devices, if any, which are managed when reading the labels. You need to load Albatros configuration (see paragraph "Directories and barcode").

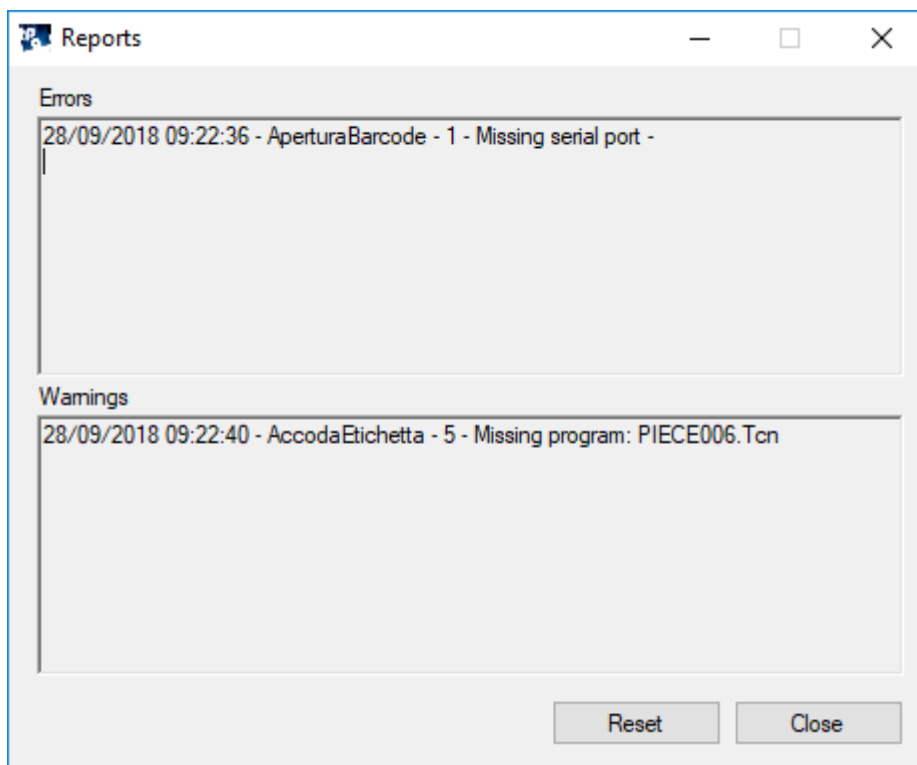
Label field separator shows the field separator used in the customisations.

Label field separator text file shows the field separator of the fields used in the lines of text file.

Customisation shows the number (as minimum one) associated to the customisation of the customer. Zero value means no customisation.

4. REPORTS

Errors or warnings can occur during conversion. The errors do not allow the regular prosecution of the operations. On the other side the warnings report the problems found during the label reading (for example, "Missing program: ").



For each warning the date, the operation carried out with its identifier and the description of the occurred problem are displayed.

5. TEXT FILE

You can create some text files ("Txt" extension), in which each line corresponds to one label.

You can associate to each label an Albatros program with the following fields: name, comment, repetitions, area, mirror, dimensions, loading, unloading and variables (max. 50).

The **Barcode** application program can import these text files, in such a way as to display all the information of the Albatros programs in a proper table.

When you read a label, the related program line is marked in blue (*Label presence* option enabled). If the initial and final characters of the text file are present in the label, the part of the program label is searched for in the specific text file.

Each field in the text file is separated from the character set in the configuration.

Example

LABEL004;PIECE001;Test;2;1;M;2000;1000;25;1;1;1000;

Label: **LABEL004**

Program Name: **PIECE001**

Comment: **Test**

Repetitions: **2**

Area: **1**

Mirror: **M**

Length: **2000**

Height: **1000**

Thickness: **25**

Loading: **1**

Unloading: **1**

Variable 1: **1000**